



COMPANY PROFILE 2024-2025

Sidewall identity.

Sidewall is a dynamic Italian group of company specializing in conveyor belt design and manufacturing.

Established in 2014, has achieved a leading position in both local and global markets.

Sidewall prioritises customer satisfaction through high product quality, reliable delivery, efficient after-sales service and an extensive global sales network.

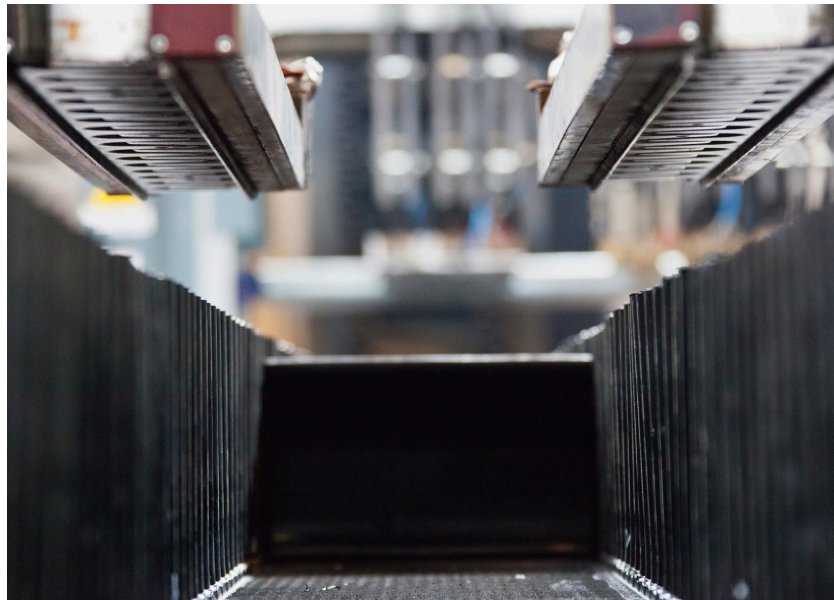
Continually investing in products, service, innovation and technology Sidewall ensures continual growth and excellence.

Sidewall team is committed to build long-term relationships with clients, distributors, suppliers and partners.



Sidewall now.

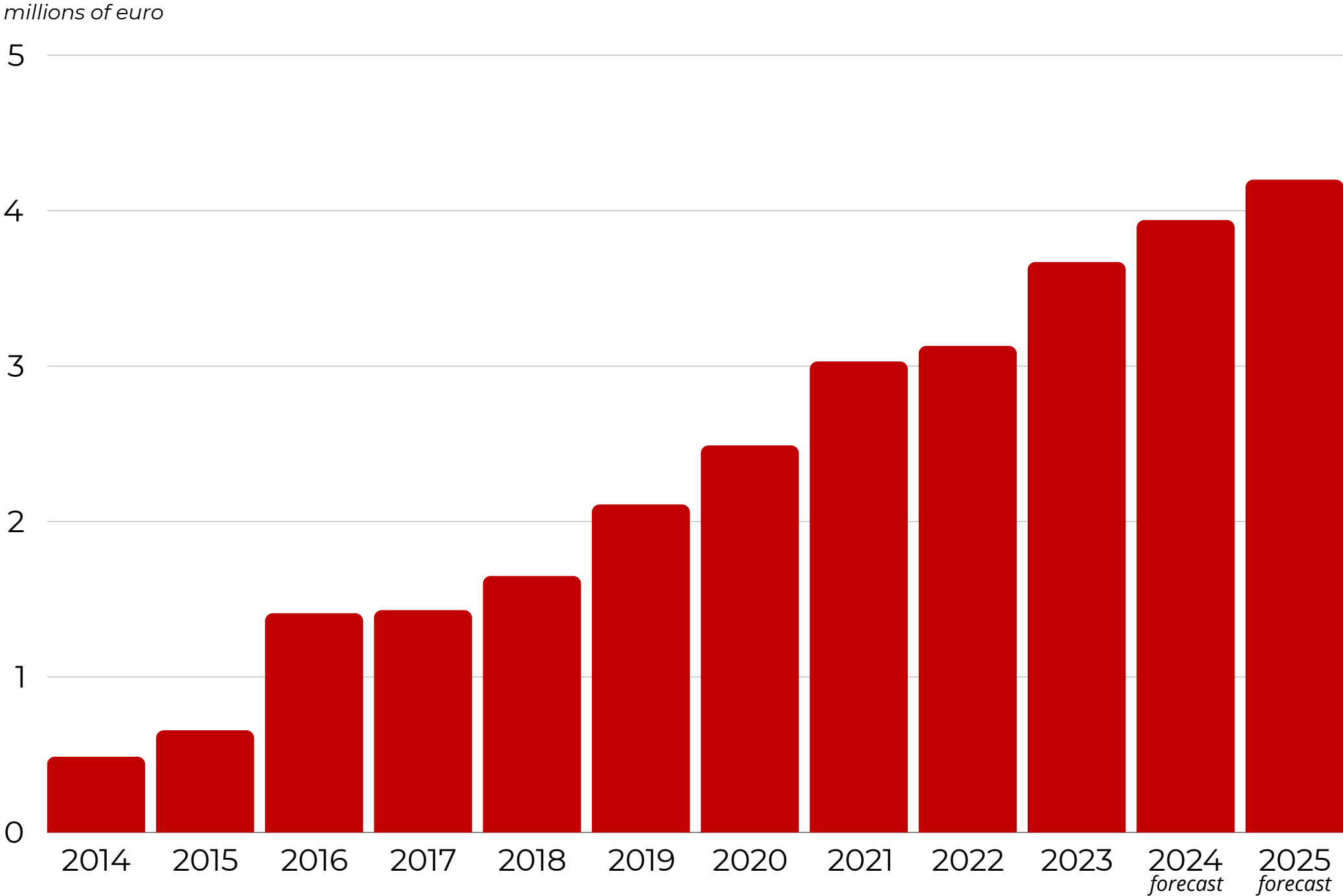
3



EMPLOYEES:	190
SIDEWALL BELT PRODUCTION:	80 m/day
GROUP REVENUES 2023:	€46.000.000

Sales volume and growth.

*Sidewall company has constantly shown positive growth over the years, with an average annual increase of 18%.
These trend allow us to forecast a constant rising even for future years.*



Worldwide presence.

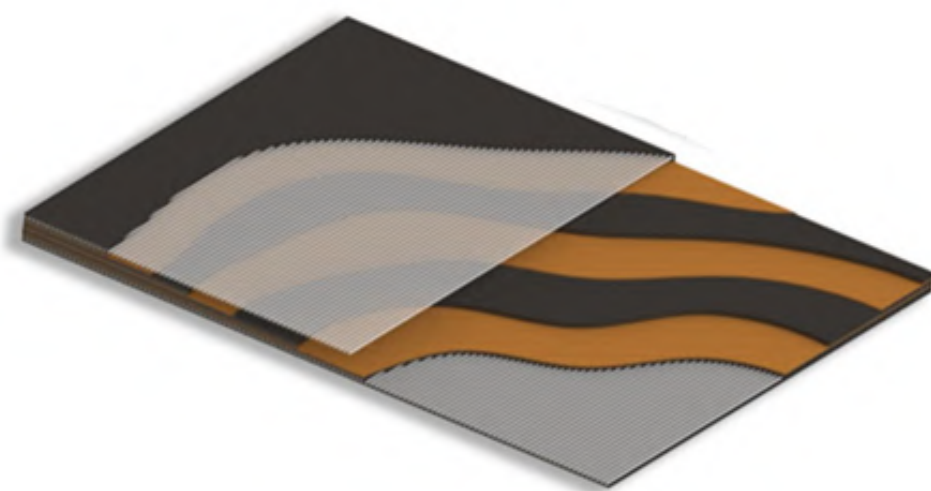
5



Sidewall is present in more than 70 countries all over the World.

Belts production.

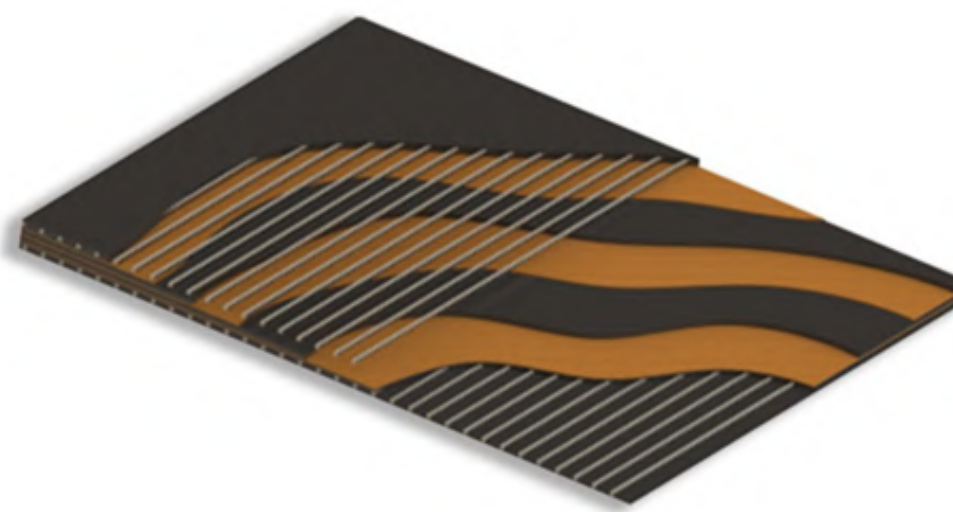
6



TEXRIGID

Textile carcass EP type with two layers of rigid fabrics.

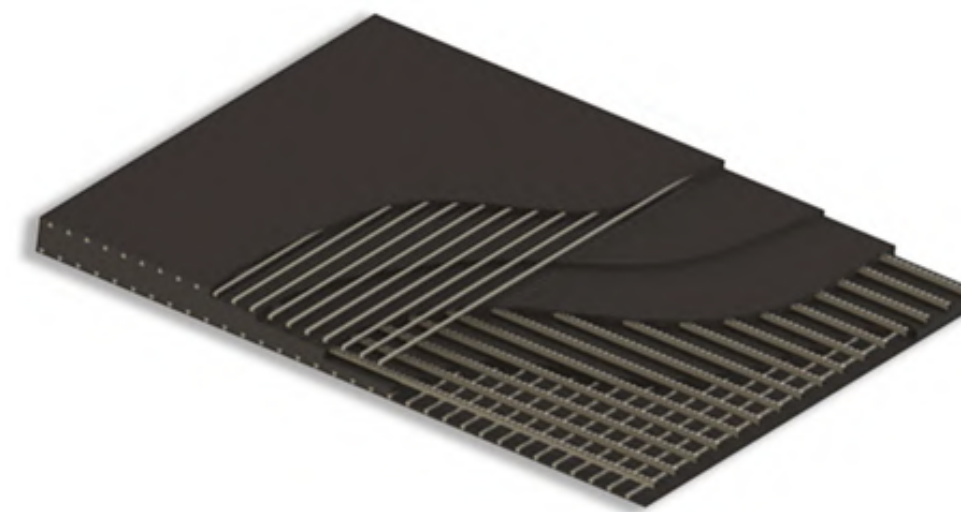
Tensile strength up to 1600 N/mm



CROSSRIGID

Textile carcass EP with stiff steel cord inserts.

Tensile strength up to 1600 N/mm.



CROSSRIGID HR

Steel cord belts with high transversal rigidity and minimum longitudinal elongation.

Tensile strength up to 3500 N/mm.

Sidewalls and cleats production.

7



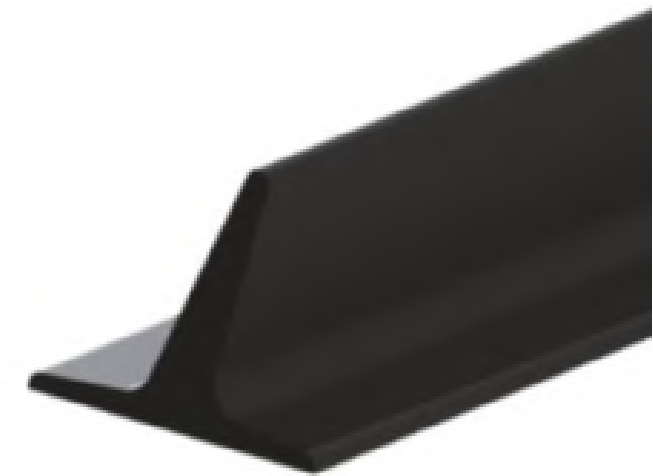
SIDEWALLS

*Available profile heights:
from 40 mm up to 500 mm*



TC CLEATS

*Available profile heights:
from 70 mm up to 280 mm*

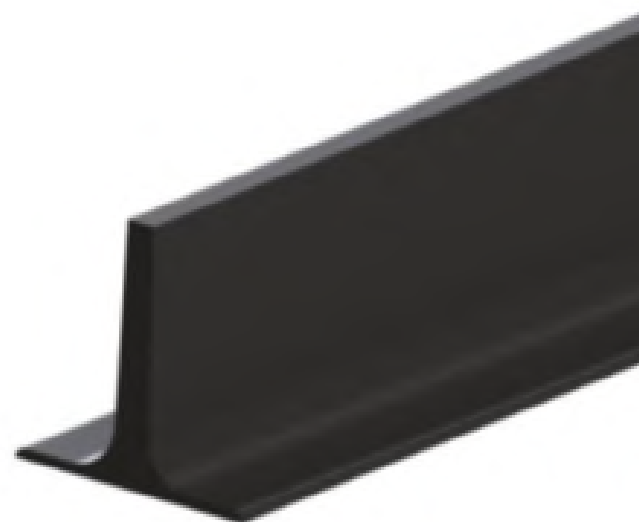


C CLEATS

*Available profile heights:
from 55 mm up to 110 mm*

Sidewalls and cleats production.

8



T CLEATS

*Available profile heights:
from 20 mm up to 180 mm*



TW CLEATS

*Available profile heights:
from 280 mm up to 480 mm*



TCW CLEATS

*Available profile heights:
from 280 mm up to 480 mm*

Rubber compounds.

9



Abrasion Resistant:

AY Standard abrasion-resistant rubber (Y Grade - DIN 22102 / RMA II).

AW Extra abrasion-resistant and Cold resistant rubber (W grade - DIN 22102 / RMA I).



Heat Resistant:

HR130 Heat resistant rubber for continuous service up to 130°C with peaks of 150°C.

HR150 Heat resistant rubber for continuous service up to 150°C with peaks of 180°C.



Oil Resistant:

OR Oil and grease resistant rubber.



Self Extinguish:

FRK Self-extinguish rubber according ISO 340, equivalent Grade K DIN 22102.



Self Extinguish and Oil Resistant:

ORK Mild Oil resistant, Self-extinguish rubber according ISO 340, equivalent Grade K DIN 22102.

All the compounds are antistatic according to ISO284 and ozone resistant.

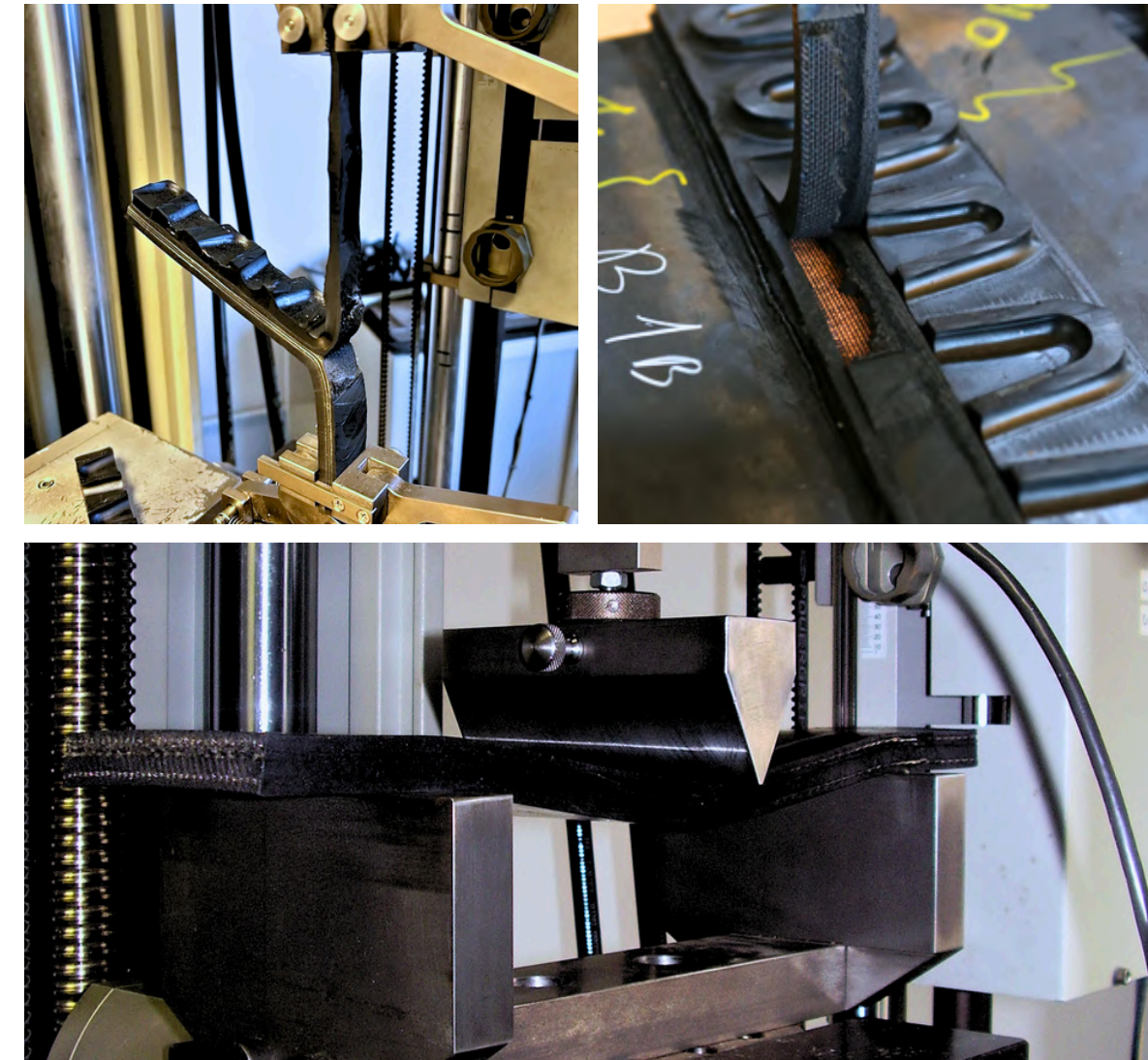
Quality approach.

10

In Sidewall we run multiple tests to be sure that the raw material used for all the processes is the best in the market.

Our products, assets and processes meet mandatory and voluntary standards in the areas of quality, health and safety, environment and social responsibility.

Every step of the production is made in Italy following the highest possible standard.



Certified quality.

11

Bureau Veritas is a global leader in inspection, laboratory verification and certification services.

Sidewall strong dedication to quality has been rewarded with our ISO 9001 certificate by Bureau Veritas and many more testimonials from our clients that switched from low-quality belts and never looked back.



Environmental awareness.

12



Sidewall has incorporated sustainable practices into the production process.
By reducing waste and using renewable energy, environmental impact is minimised.

ENERGY SAVED: 140.000 kWh/year

CO₂ EMISSIONS SAVED: 74.000 Kg/year

ENERGY DEMAND COVERED BY RENEWABLE ENERGY: 100%

Reference list.

13

Sidewall has the privilege of serving prestigious customers, from small companies to multinationals. Steel mills, mines and cement plants are the main, but not the sole, fields of application for our belts.



Acciaieria**Arvedi**



Key strengths.

1 - Internal production.

All the Sidewall's components are made and assembled in our facilities in Italy.

The completed conveyor belt is produced by hot vulcanising the cleats and the sidewalls onto the base belt.



BASE BELT
PRODUCTION LINE



SIDEWALLS
PRODUCTION LINE



CLEATS
PRODUCTION LINE



SIDEWALLS BELT
PRODUCTION LINE

Key *strengths.*

15

2 - Staff.

Sidewall's core business is the production of conveyor belts.

Our entire team, from sales and management departments to technicians and logistics experts, is dedicated to prioritising customer demand for belts.

We offer full technical support before and after the sale, with multilingual assistance available 365 days a year.

Our highly specialised technical staff is ready to assist you in designing new installations and solutions tailored to your needs.

In addition, we offer technical sessions directly at your company to ensure you have the knowledge and skills to maximise the benefits of our products and services.

Key strengths.

3 - Designing.

Sidewall’s technical team can support you in designing the right belt to fit your needs.

In order to set correct Sidewall belt dimensions, specific geometrical formulas have to be used based on speed, elevation, slope, center distance and coveyed material.

In particular we pay attention to free lateral spaces working tension and relative safety factor; we take also care of possible cleats interference during the belt loading.



SIDEWALL Calculation		
Customer	SIDEWALL	
Reference	NEW OFFER CALCULATION	
Offer	20240000	02.04.2024

General features

Quantity	1	
Belt type	Endless belt length	
Belt reference	TEXRIGID 500/3+2 5+3	
Required capacity	ton/h	30
Filling factor (usually 0,75)	0,75	
Belt speed	m/sec	1,25
Conveyor type	S-Shape	
Max. slope	deg	60
Elevation	m	27,5
Center distance	m	38,2
Material handled	Raw coal	
Bulk density	ton/m3	0,75
Surcharge angle	deg	20,00
Lump size	mm	100

Belt characteristics

Belt width	mm	650
Side wall type	HEF-160/75	
Cleat type	HBF-TC140	
Screwed cleats	Yes	
Cleat pitch	mm	240
Free lateral space	mm	100
Belt tensile strength	N/mm	500
Rubber edge width	mm	Cut edges
Rubber quality	AY Abrasion Resistant	

Calculation data

Useful capacity	ton/h	50,4
Useful capacity	m3/h	67,2
Useful belt width	mm	300
Side wall width	mm	75
Belt weight approx.	kg/m	21,0
Max. working tension at drive pulley	N/mm	17,0
Max. working tension on lateral spaces	N/mm	42,1
Safety factor	29,4	
Safety factor at lateral spaces	11,9	
Required take-up at tail	kg	346
Required power	kW	5,4
Suggested motor power (η=0,85)	kW	7,5
Min. pulley diameter	mm	480
Min. deflection wheel diameter	mm	640
Min. wheel width	mm	80

Key strengths.

4 - Packaging.

The orders we are commissioned, often include belts that will not be used immediately.

That is why our technical department has designed different types of packaging according to the needs of our customers.

One of the most required options is our fully enclosed crate with sandwich panels that guarantees 6 months of belt storage by protecting it from the natural ageing process.



Key strengths.

5 - After sales.

Sidewall provides a long list of after-sales services to ensure maximum customer satisfaction.

Our personnel will visit your company to install and verify that the belt is in perfect condition.

We offer customised maintenance programmes to ensure the long-term performance of conveyor belts.

Our maintenance plans include regular inspections, belt alignment checks and component replacements, if necessary.

**PROMPT 360°
SERVICE**

**24/7
TECHNICIANS
AVAILABILITY**

**LARGE STOCK
OF
SPARE PARTS**

Sidewall group.



In partnership with Bi-State Rubber, in 2024 we have established a Sidewall belt production facility in Fenton, Missouri.

Enabling us to swiftly and efficiently deliver the excellence of our hot vulcanized tailormade conveyor belts to the North American market.

Our goal remains unwavering: to manufacture the finest conveyor belts for highly inclined or vertical transport.



EMPLOYEES:	28
SIDEWALL BELT PRODUCTION:	30 m/day
BSR REVENUES 2023:	\$11.000.000

Business contacts.

20



Sidewall - Rete di imprese

Via Amaducci, 50 - 61021

Carpegna (PU) – Italy

phone +39 0722 72721

info@sidewall.it

www.sidewall.it



www.sidewall.it



FOLLOW US ON 